



SORENSEN  
IMPACT



David Eccles  
School of Business  
THE UNIVERSITY OF UTAH



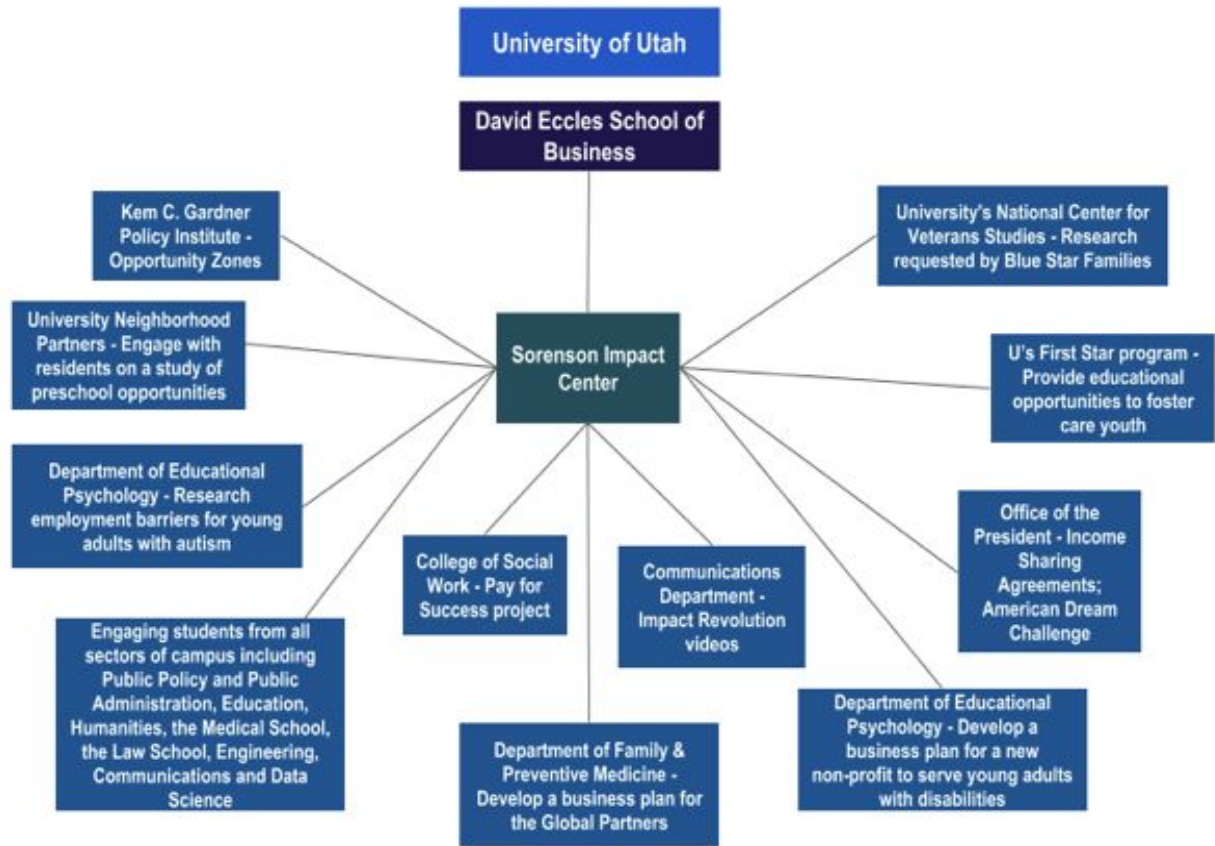
# The Sorenson Impact Center

- Think-and-do tank housed in DESB
  - Focuses on solving social problems using data & innovation
- Endowed by James Lee Sorenson in 2013
  - Additional funding from:
    - University Venture Fund II (outside donors)
    - Federal grants
    - Private contracts & grants
    - Conference registration fees & fund management fees

# Sorenson Impact Center












- Works with public, nonprofit, & private sector groups globally to develop & implement outcomes-driven solutions
- Partners with faculty in research and educational efforts
- Collaborates with multiple departments for educational opportunities in theory & practice of impact investing

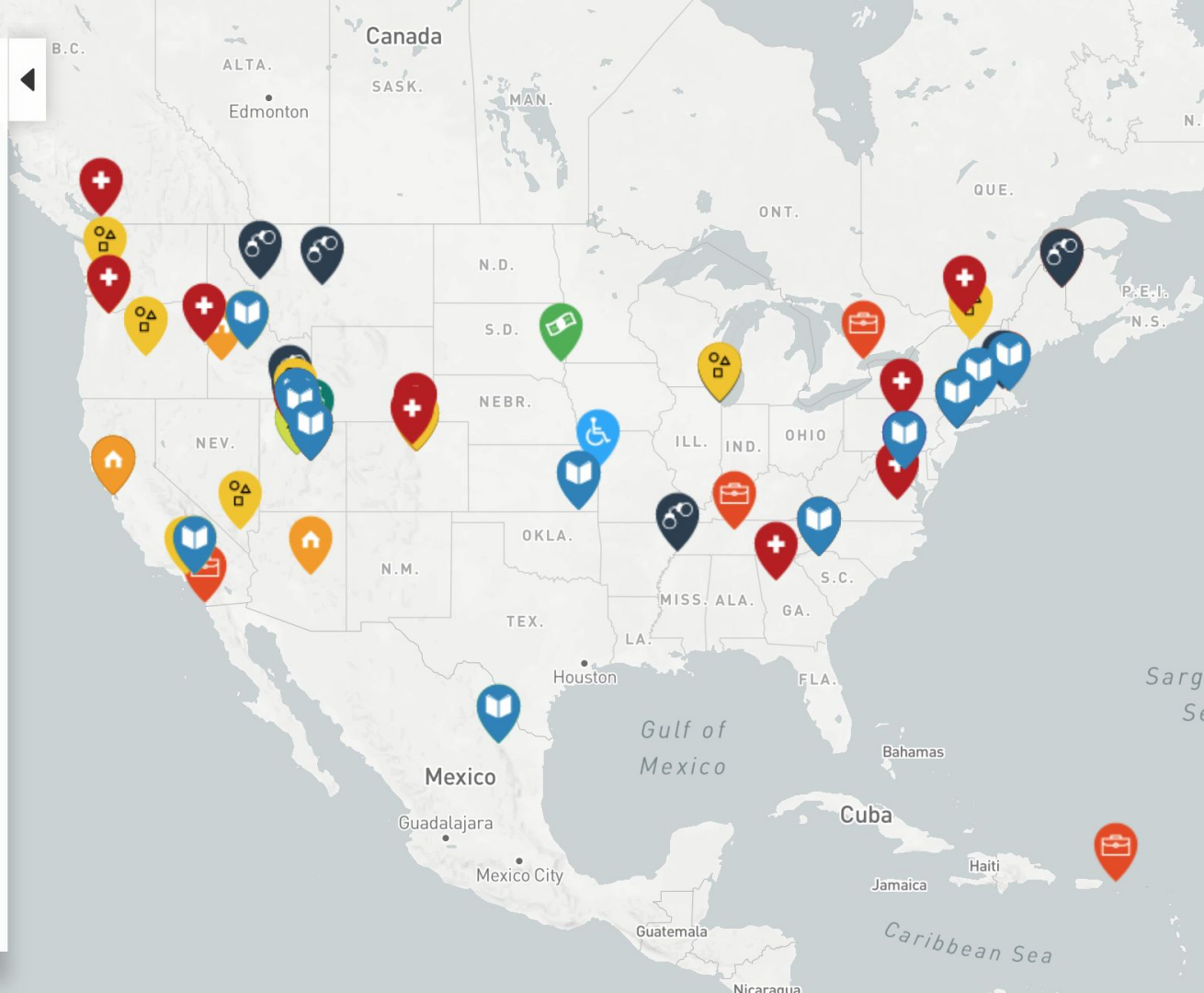
# Existing Campus Partnerships



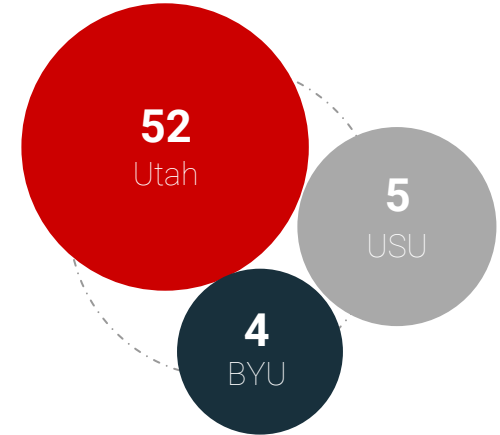
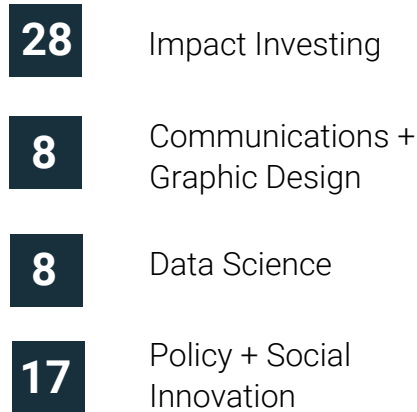
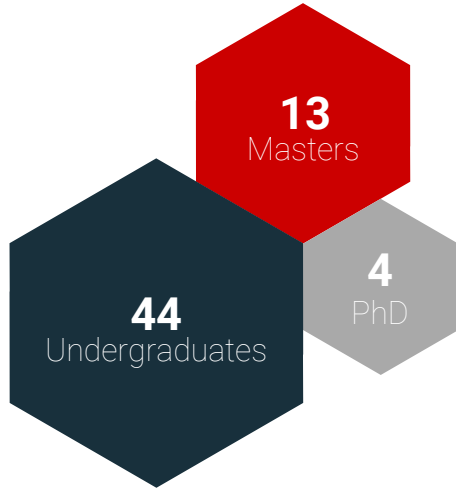


## Our Projects

	Education	28	<input type="radio"/>
	Health	23	<input type="radio"/>
	Early Childhood Development	18	<input type="radio"/>
	Criminal and Juvenile Justice	16	<input type="radio"/>
	Homelessness & Housing	15	<input type="radio"/>
	Workforce Development & Jobs Creation	16	<input type="radio"/>
	Financial Inclusion	7	<input type="radio"/>
	Support to People with Disabilities	3	<input type="radio"/>
	Support to the Elderly	5	<input type="radio"/>
	Energy	4	<input type="radio"/>
	Support to Veterans	2	<input type="radio"/>



# 61 STUDENT INTERNS



227 APPLICANTS

6 AFFILIATED FACULTY

# AFFILIATED COURSES

BUS 1051

ENTREPRENEURSHIP 2020, 2030, 4999, 5000, 5850, 5910

FINANCE 5881, 6881

MANAGEMENT 6780

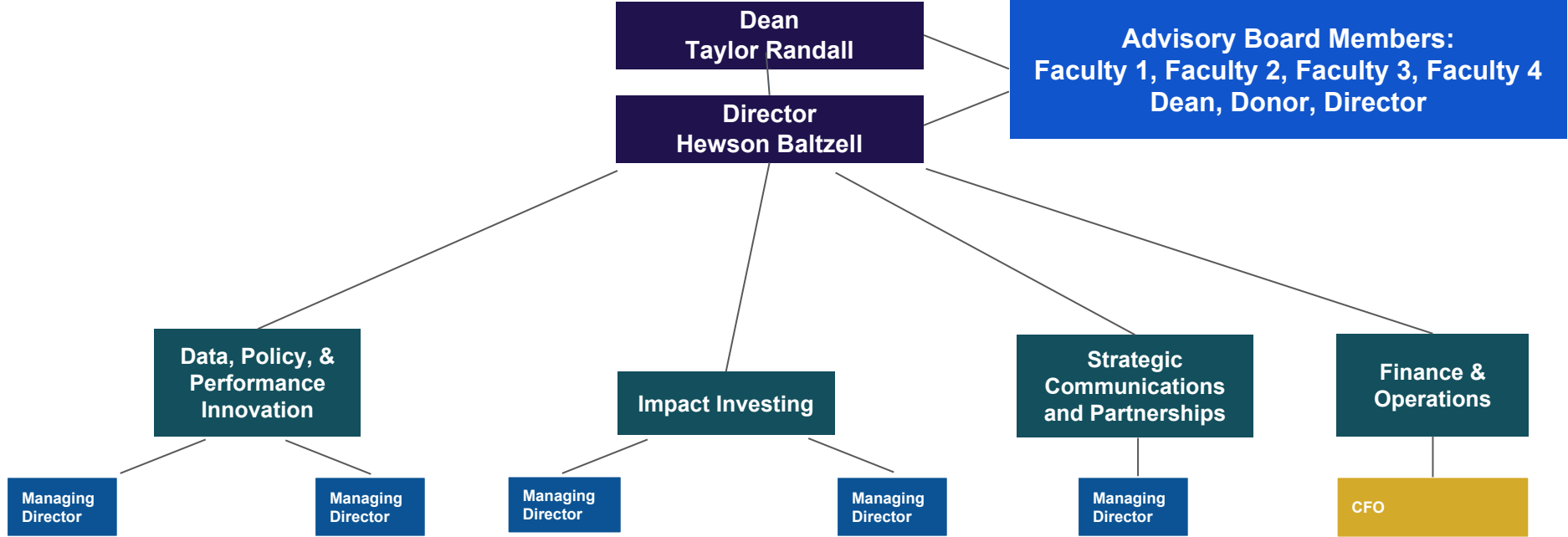
STRATEGY 6910

CMP 3400, 6322 (REDEV 6322)

# Organization and Governance

- Center Director appointed by Dean in consultation with faculty search committee through usual university process
  - Meets monthly with Dean
- Advisory Board provides input to Director and Dean
  - Meets quarterly
  - Currently: Dean, Director, Donor,\* and two faculty members
    - Will add two more faculty members, including at least one from outside DESB
- Courses are developed by departmental curriculum committees through usual college process and taught by faculty members

\*per gift agreement during donor's lifetime



Thank you

Questions?



SORENSEN  
IMPACT



**David Eccles**  
**School of Business**  
THE UNIVERSITY OF UTAH

---

[www.sorensonimpact.com](http://www.sorensonimpact.com)